

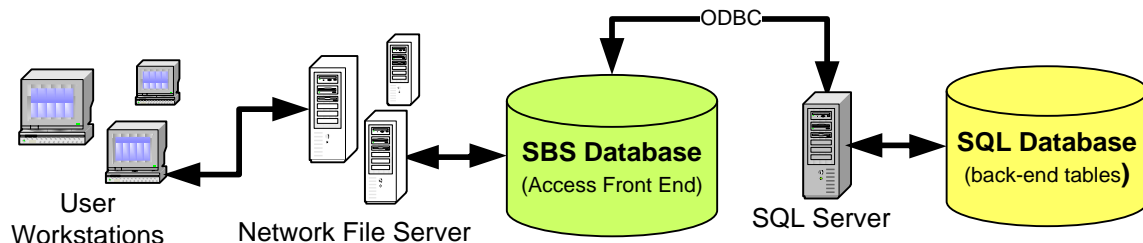
## Demo Install Instructions

### *Requirements and Installation*

- The SBS demo program is a stand-alone Microsoft Access Database
  - Compatible with Access 2007, 2010, 2013 or 2016
  - Demos are 32 Bit compatible (64 bit versions are available upon request)
- **Do not open the database from inside the .zip folder.** It MUST be extracted or unzipped and saved locally before running.
- To run the SBS database demo, you will need Microsoft Access installed.
  - If you do not have Microsoft Access, a free runtime version can be downloaded from Microsoft:  
<https://www.microsoft.com/en-us/download/details.aspx?id=10910>
- Once Microsoft Access is installed, unzip the database file (the file ending in .accde) included in the zip file and save it locally.
- Launch the database once it has been unzipped and saved locally.

### *Demo products*

- Each database is a demo product which allows the user to install and run the product 25 times.
- After the 25<sup>th</sup> time, the product must be purchased and a valid registration product Key will be provided. Once entered, this product key will allow unlimited use of the software.
- To purchase the registered software, visit our website at [www.SundayBizSys.com](http://www.SundayBizSys.com)
- The purchased version of the T-Med database is a Microsoft SQL based product with a Microsoft Access user interface or front end. The data resides in a Microsoft SQL database (or back-end).



### ***Other Services***

- Training Services: SBS offers instructor led, Webex based, interactive training sessions that are very helpful. We will teach you proper set-up and use of the program in a flexible learning environment.
- Data Import Services: We offer data import services to import your data from legacy files or spreadsheets.
- Customization: we offer a full range of customization services to modify the database to meet Customer requirements.

### ***Other Products***

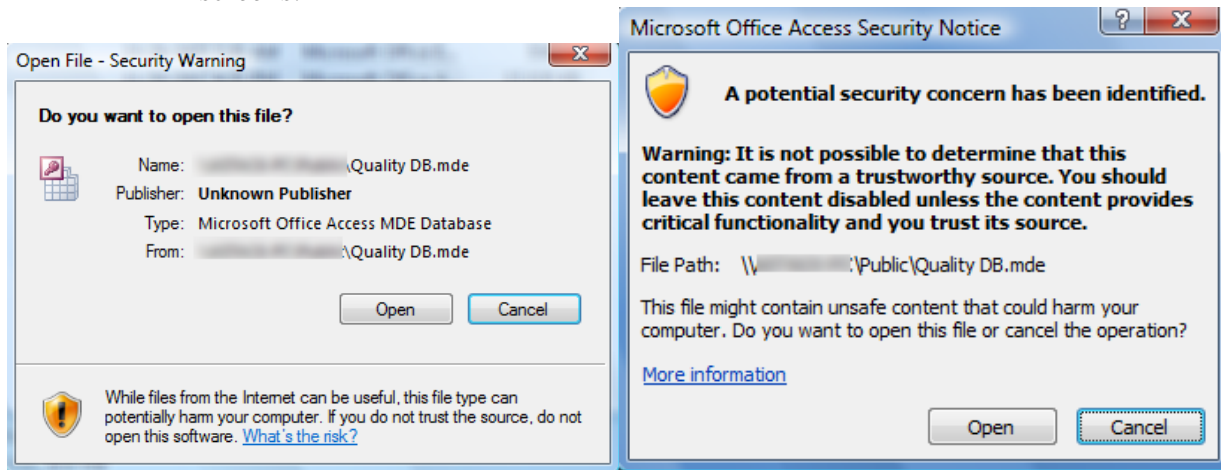
- SBS offers other products as components of a complete Quality Management System including solutions for employee training management, document control, CAPA, non-conformance management, risk analysis / FMEA, SPC, Calibration control, Preventive Maintenance, and more.
- Full featured demo downloads of each are available from the website.

[www.SundayBizSys.com](http://www.SundayBizSys.com)

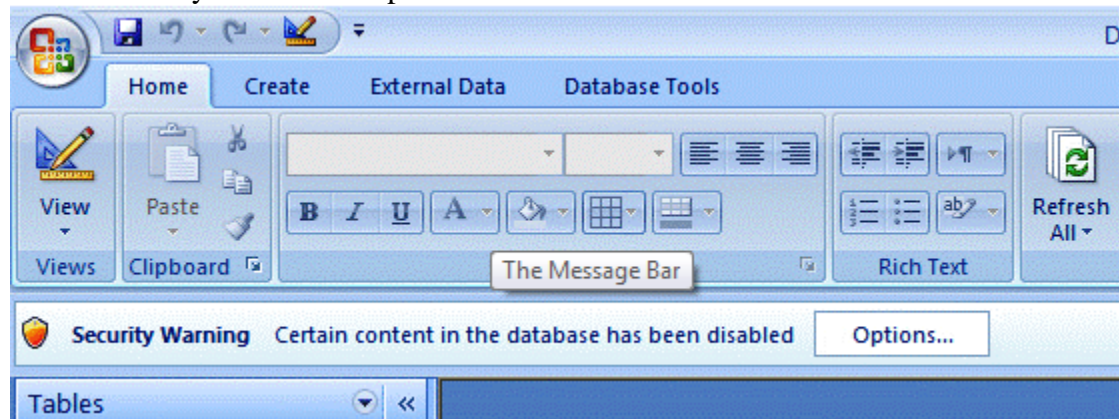
**Thank you for your interest in our products. Your feedback, including ideas to improve our products, is always welcome. Please provide any feedback to [feedback@SundayBizSys.com](mailto:feedback@SundayBizSys.com).**

## Microsoft Security Considerations

- Microsoft Access 2007 and higher
  - Depending on your specific configuration, you may encounter the following screens:



- In each case, SBS products are not malicious or intended to harm your computer. They are safe and have been scanned for viruses prior to publication.
- Click on the open button.
- If you get the following security warning, the database will be functionally disabled until you click the Options button and enable the content:



- Sunday Business Systems recommends saving the Database in a Trusted Location using Trusted Center in Access 2007, 2010, 2013 and 2016.
  - To open the **Trust Center**, click the **Microsoft Office Button** in the upper-left corner of the Access window, and then click **Access Options**. Click **Trust Center** in the left pane, and then select **Trust Center Settings**.
- For more information, refer to "Security Considerations and Guidance for Access 2007" at <http://msdn2.microsoft.com/en-us/library/bb421308.aspx>